

How it Works: Flex Fuel Sensor

gpd

Flex Fuel Sensors are designed for vehicles running Flex Fuel or E85. These sensors regulate the ethanol-gasoline ratio of the fuel being used by flex fuel equipped vehicles. The flex fuel sensor is generally located on the fuel line of the fuel system. Vehicles may experience hard cranking, decrease of power, engine shutdown, stalling, and failed emissions test if the flex fuel sensor is not replaced when malfunctioning.

Signs of a faulty Flex Fuel Sensor

- Decrease in engine performance
- Decrease in fuel efficiency
- Rough start and/or idle

**gpd offers 5
Fuel Flex Sensors covering applications 1996+
Designed to meet/exceed OE fit, form, and function.**



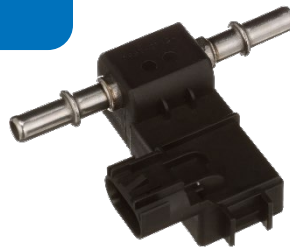
1812949

1996–2001 Ford Taurus/Mercury Sable
1999–2003 Ford Ranger



1812950

2002–2005 Chevrolet Tahoe
2000–2002 Chevrolet S10/S15 Pickup
2002–2005 Chevrolet Silverado



1812951

2015–2017 Chevrolet Tahoe
2015–2017 Chevrolet Suburban
2014–2017 Chevrolet Silverado
2015–2017 Chevrolet Impala



1812953

2011 Buick Regal
2012–2015 Chevrolet Van Express/Savana



1812952

2012 Buick Lacrosse
2013 Buick Verano
2012–2013 Buick Regal

Global Parts Distributors, LLC

TECH TIP

#215

gpdtechtips.com

Manufacturer names, logos and part numbers are for reference only. All prices, taxes and availability are subject to change without notice. This document and any files transmitted with it are confidential and intended solely for the use of the individual or entity to which they are addressed. If you have received this document in error, please delete it immediately. Note that any views or opinions presented in this document are solely those of the author. Any unauthorized review, use, disclosure, or distribution is prohibited. Global Parts Distributors, LLC (gpd) accepts no liability for any damage caused by any virus or other means transmitted by this document. © Global Parts Distributors, LLC (gpd)