



5811368

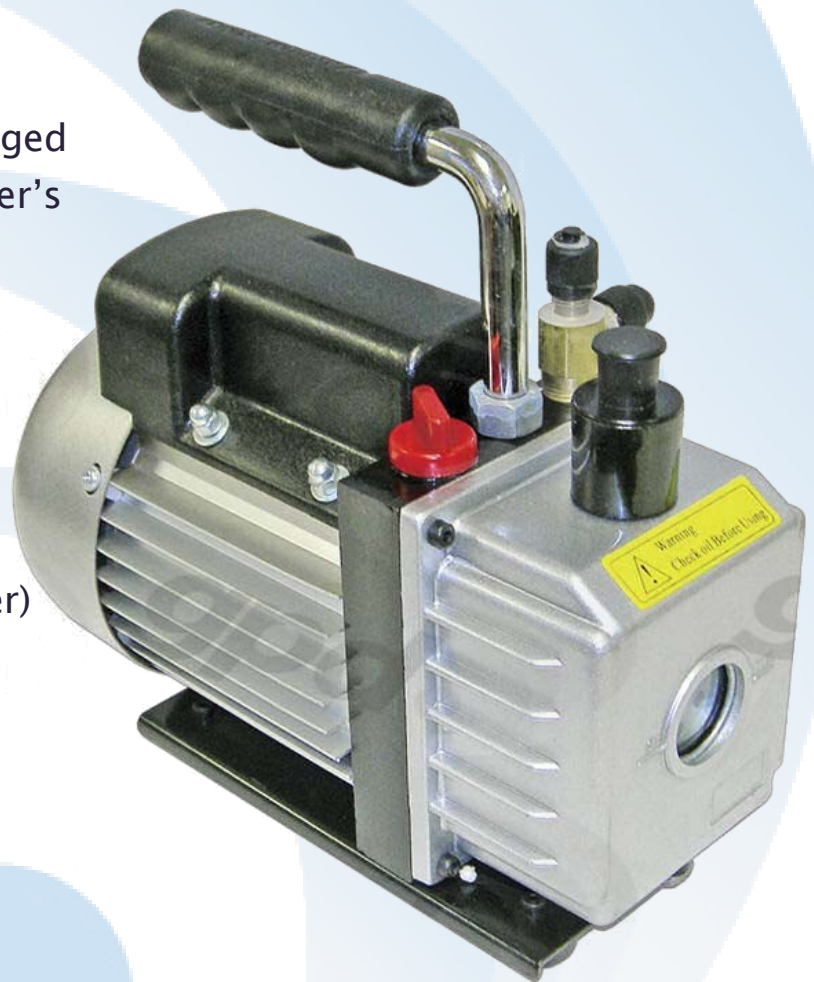
Electric Vacuum Pump

It is important that before recharging a vehicle's air conditioning system that it is evacuated to remove the moisture and to also check for any leaks. Once the system has been placed into a vacuum (gpd #5811368) for 45 minutes, it needs to hold that vacuum for five minutes.

After completion, it can be recharged with a refrigerant per manufacturer's specifications.

Tools Needed:

- Gauge Set- 5811258
(Located on reverse side of flyer)
- Vacuum Pump- 5811368



**For more information,
Please contact your Sales Representative!**



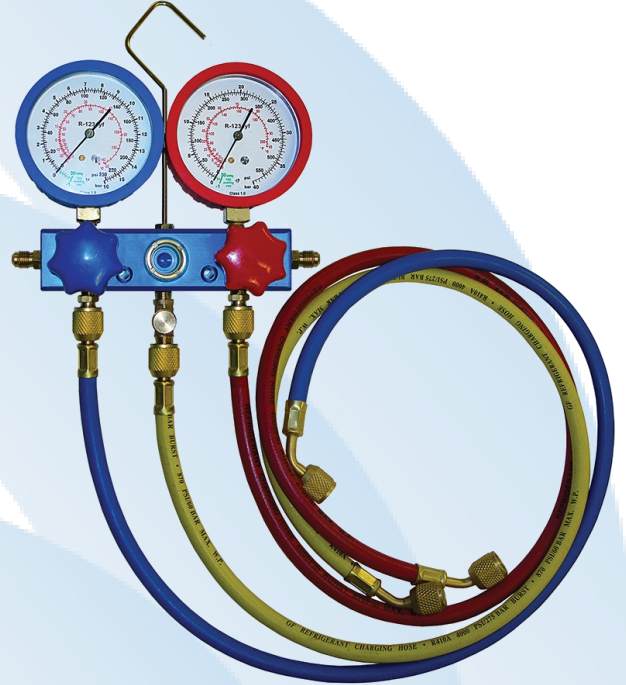
5811459

R1234yf Aluminum Gauge Set

The new refrigerant is now being introduced into the U.S. Market with GM and Chrysler leading the way. The new refrigerant requires different couplers to access the service ports. The refrigerant tank uses a left hand thread on the valve.

Kit Includes:

- Aluminum Manifold w/ Sight Glass
- R1234yf Sealed Gauges w/Rubber Covers
- 36" Hose Set
- Manual Service Couplers
- Anti-Blowback Valve
- Tank Adapter- 1/2" ACME LH Thread



Couplers:

Hi-Side
Coupler



Low-Side
Coupler



Coupler Adapter:

1/4" Male
Flare



1/2" Male
Thread

Tank Adapter:



1/4" Male
Flare

Anti-Blow Back:

1/4" Male x
1/4" Female



Shut-Off Valve:

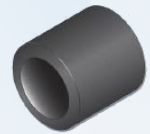


Gaskets:

5811245
(1) Kit
6 Gaskets



5811245
Charging Hose
Single Gasket



5811250
Tank Adapter
Gasket



1311366
Coupler Adapter
Gasket

